

# Combined Reserve Management Plan

Pourewa Creek (*Pūrewa*)  
and Whenua Rangatira  
(*Takaparawhau &  
Ōkahu Bay*)

XXXXXXXXXX  
XXXXXXXXXX  
XXXXXXXXXX

**Kākahuria te Whenua,  
Kākahuria te Moana**  
*Adorn the land,  
Adorn the moana*



NGĀTI WHĀTUA ŌRĀKEI RESERVES BOARD



Orakel 700-acre Block

**Our identity is  
formed by moments  
in history and our  
connection to the  
natural world**

**I ahu mai tō tātou  
tuakiri i ngā wā  
hirahira o mua me  
tō tātou hononga  
ki te taiao.**



## **Kākahuria te Whenua, Kākahuria te Moana Adorn the land, Adorn the sea**

*Kākahuria te whenua, kākahuria te moana* means to adorn the land and adorn the sea.

This statement reminds us of our collective responsibility as tāngata whenua and the wider community of Ōrākei, Auckland and Aotearoa that our impact on the land and sea, has an equal impact on us as people.

It is the name for the Combined Reserve Management Plan for Whenua Rangatira and Pourewa Creek.

The Ngāti Whātua Ōrākei Reserves Board (Reserves Board) is proud to present this Plan as the manifestation of a partnership that views our actions through this lens. We encourage everyone to take the same approach.

The purpose of this Combined Reserve Management Plan is to provide a roadmap for the next 10 years. It is intended to give effect to the Ōrākei Visual Framework (Framework). The Framework brings together many ideas from whānau and

the Ōrākei community into a collective vision to unlock the potential of these lands for current and future generations. The Framework tells us where we are going and what we will do. This Combined Reserve Management Plan tells us how we are going to get there.

Both documents ensure that these lands remain safe, open spaces for all communities to connect and experience the hospitality of Ngāti Whātua Ōrākei.

This Plan is inspired from the vision "He Aha Te Hau" which led Ngāti Whātua Ōrākei to gift land to the people of Aotearoa to establish Auckland City.





The Ōrākei Reserves Board is a partnership between Ngāti Whātua Ōrākei and Auckland Council established to jointly manage land owned by Ngāti Whātua Ōrākei for the benefit of whānau and the community. It is made up of 3 members appointed by Ngāti Whātua Ōrākei and 3 from Auckland Council. A Ngāti Whātua Ōrākei representative is the Board Chair.

# “Mai i te pito, ki te mata”

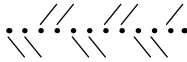


**1700s**

Tuperiri and other Te Taoū chiefs successfully invade Tāmaki Isthmus

**1840**

Ngāti Whātua Ōrākei Rangatira sign Treaty of Waitangi at Manukau Harbour. Apihai Te Kāwau gifts 3,000 acres to establish Auckland city on behalf of Ngāti Whātua Ōrākei



**2019 - Now**

The Reserves Board approves the Ōrākei Visual Framework & agrees to prepare a Combined Reserve Management Plan to deliver the Framework

**2012**

Ngāti Whātua Ōrākei Claims Settlement Act contains Crown apology and vests ownership of Pourewa Creek in Ngāti Whātua Ōrākei

# “From then, to now”



**1859 – 1952**

Ngāti Whātua Ōrākei suffer significant land loss at the hands of the Crown. By 1951 Ngāti Whātua Ōrākei are reduced to a mere ¼ acre. In 1952 the Ōkahu papakāinga is razed to the ground and the people evicted



**1869**

Judge Fenton's Ōrākei judgment concluded that Ngāti Whātua Ōrākei had title to the Ōrākei Block and are mana whenua in central Tāmaki



**1991**

Ōrākei Act vests ownership of Whenua Rangatira in Ngāti Whātua Ōrākei and establishes the Reserves Board



**1976 - 78**

The Crown propose to develop last of the Ōrākei Block at Bastion Point. The 506 day occupation takes place



# He Moemoeā

## Our Vision

The Ōrākei Visual Framework sets out the Vision for Whenua Rangatira and Pourewa Creek.

XXXXXXXXXX  
XXXXXXXXXXXXXXXXXXXX  
XXXXXXXXXXXXXXXXXXXX







## Whenua Rangatira

### Whenua Rangatira Legal Description

Approximately 50 hectares of Recreation Reserve

Comprises Takaparawhau and Ōkahu Bay. Vested in Ngāti Whātua Ōrākei for the common use and benefit of Ngāti Whātua Ōrākei and citizens of Auckland. Managed by the Ngāti Whātua Ōrākei Reserves Board.

Ōrākei Marae and the papakāinga is nestled within Whenua Rangatira but are not managed by the Reserves Board.

Whenua Rangatira is the key platform to experience the cultural identity and hospitality of Ngāti Whātua Ōrākei. It is a place for all whānau to connect and reflect.





## Ki Uta Ki Tai

Ki Uta Ki Tai brings Whenua Rangatira and Pourewa Creek together. People will move safely throughout and between the reserves in a way that supports the mauri (life essence) of the whenua (land) and moana (sea). To the people of Ngāti Whātua Ōrākei, these reserves are intrinsically linked and form part of a connected eco-system. Ngāti Whātua Ōrākei whānau will be able to move throughout and between the reserves from the papakāinga and marae safely. Ki Uta Ki Tai supports all visitors to experience that relationship between whenua and moana.

## Pourewa Creek

### [Pourewa Creek Legal Description](#)

Approximately 34 hectares of Recreation Reserve

Vested in Ngāti Whātua Ōrākei.  
Managed by the Ngāti Whātua Ōrākei Reserves Board.

Pourewa Creek is a coastal site that provides access to the moana.

It is the key platform for restoring native rākau, traditional rongoā resource, native habitat and māra kai to sustain communities.

With connections to the green corridor and key transport linkages (pedestrian, cycle, rail, vehicle and waka), it is a place where Ngāti Whātua Ōrākei reaches out to the community and to the world as an example of how people sustain place and place sustains people.

# Pitomata

## The Journey Toward Our Vision

**Ngā Ara** | 4 Priority Activities guide delivery of the Ōrākei Visual Framework across Whenua Rangatira and Pourewa Creek Recreation Reserves over the next 5 – 10-year period. Ngā Ara guide **WHAT** activities we will do and **WHEN**.

XXXXXXXXXX  
XXXXXXXXXXXXXXXXXXXX  
XXXXXXXXXX XXXXXXXXXXXX





**Te Ara 1 | Priority 1****Protect**

Protection focuses on preserving the unique parts of the whenua and future proofing the vision.

These activities will be prioritised within the first 5 years.

**Te Ara 2 | Priority 2****Connect**

Connection focuses on getting back to nature to ensure the natural elements are in its rightful state.

These activities will be spread across the first five years to support the protection phase and the second five years to set up for the enhancement phase.

**Ngā Poutama**

These statements of identity and character are common threads relevant to all activities.

Ngā Poumata guide **HOW** we do things.

**Matakura** | Proud - Embrace Ngāti Whātua Ōrākei status and role as tāngata whenua

**Matohe** | Determined – Protect peoples, lands and taonga for generations to come

**Matawara** | Aspirational – Work with whānau and our communities

**Matauruuru** | Adaptable - Innovate to pursue improved practices

**Mātōa** | Resilient – Monitor and regularly review

**Te Ara 3 | Priority 3**

# Activate

Activation focuses on the interaction between people by creating spaces to come together.

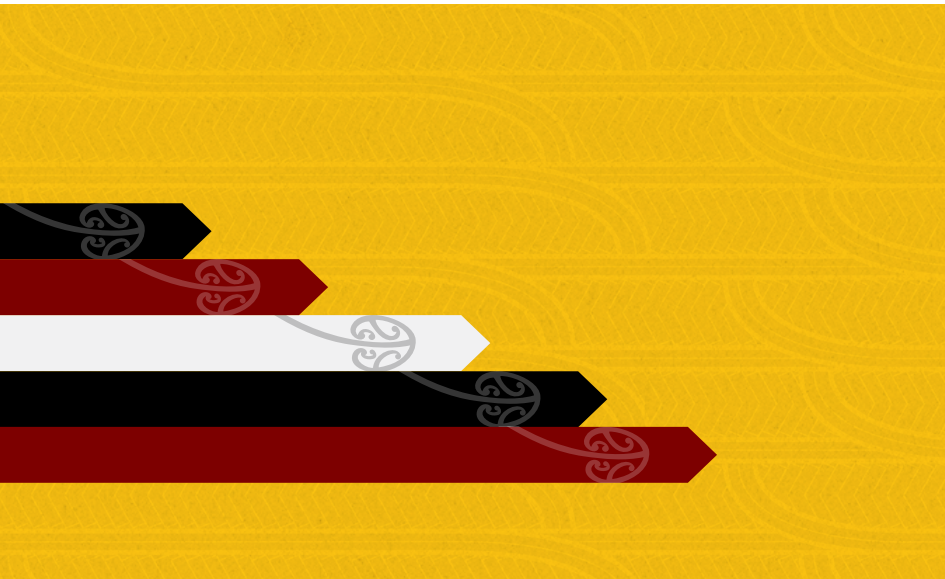
These activities will be spread across the first five years to support the protection phase and the second five years to support the enhancement phase.

**Te Ara 4 | Priority 4**

# Enhance

Enhancement focuses on larger infrastructure to support the existing experiences.

These activities focus on ensuring the future is clearly understood for larger infrastructure projects. Key foundation projects to support Ngāti Whātua Ōrākei knowledge and practices will be prioritised.





Manaaki Manuhiri, Tourism Centre



**Manaaki Manuhiri - “...  
an opportunity to share  
histories as well as a  
vision for the future  
through the lens of a  
Ngāti Whātua Ōrākei  
world view”.**

**Ōrākei Visual Framework, 2019.**

# Whenua Rangatira

## (Takaparawhau & Ōkahu)

XXXXXXXXXX  
 XXXXXXXXXXXXXXXXXXXXXXXX  
 XXXXXXXXXXXXX

### Ngā Ara | Priorities

#### Protect

- Tomo-kanga
- Ko te Pūkaki
- Ōkahu
- Ahi Kā
- Mahi Toi & Cultural Practice
- Ki Uta Ki Tai

#### Connect

- Ko te Pūkaki
- Ōkahu
- Ki Uta Ki Tai

#### Activate

- Paihikara & Shared Path
- Markets
- Tākaro
- Ōkahu
- Mahi Toi and Cultural Practice

#### Enhance

- Markets
- Manaaki Manuhiri
- Ko te Pūkaki
- Waka
- Ōkahu

These identified areas are indicative of where most of this activity will occur.  
 These activities may apply across the entire reserve.



01. Mahi toi & Cultural Practice



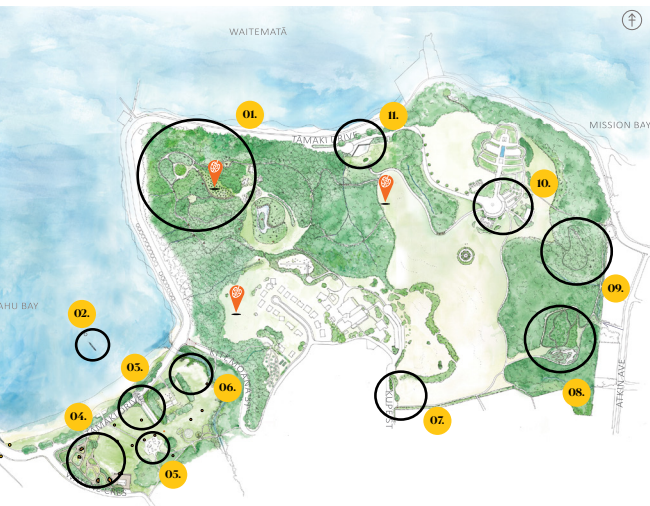
02. Ahi Kā



03. Waka



04. Ōkahu



05. Tākaro

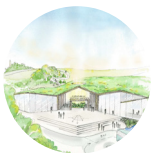


06. Ki Uta Ki Tai



07. Tomo-Kanga

 Possible Urupā Site



08. Manaaki Manuhiri



09. Markets



10. Ko Te Pūkaki



11. Paihikara & Shared Path

## Te Ara 1 | Priority 1

# Protect



## the unique parts of Takaparawhau and Ōkahu

### Whithin 5 Years



#### Tomo-Kanga

- Implement Tomo-Kanga Plan
- Guide visitors into public spaces
- Separate hapū road from public
- Complete Pā harakeke buffer
- Create supporting signage, contours and speed humps
- Set aside the spaces for hapū, whānau and traditional use
- Connect papakāinga to reserves



#### Ko Te Pūkaki

- Maintain historic sites
- Stabilise cliff
- Preserve knowledge of the old springs



#### Ōkahu

- Acknowledge hapū connections with Tomo-kanga and road surface treatment
- Acknowledge tapu areas and mark Ōkahu papakāinga
- Create spaces for cultural education and transmission of mātauranga





### Ahi Kā

- Implement Ahi Kā plan
- Retain picnic spots closer to Kitemoana St
- Acknowledge tapu sites
- Create ways to locate former whareniui and whānau whare
- Strengthen hapū connections from papakāinga
- Establish community gardens



### Mahi toi & Cultural Practice

- Work to establish a new urupā including setting aside land
- Mark spring for whenua burial with mahi toi
- Create separation for ongoing traditional hapū use while retaining papakāinga views
- Retain connections with whareniui and explore mahi toi



### Ki Uta Ki Tai

- Develop Ki Uta Ki Tai plans to ensure future activities are clearly understood and provided for throughout the delivery of this plan



## Te Ara 2 | Priority 2

# Connect

## to nature



### Whithin 5 – 10 Years



#### Ko Te Pūkaki

- Undertake enrichment and whenua planting
- Implement pest prevention & removal plan
- Preserve Rongoā & Orchards for use and knowledge
- Undertake whenua planting
- Restore mauri of wai including harvesting and management
- Implement mahinga kai



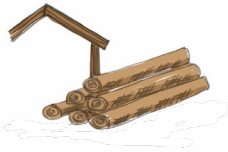
#### Ōkahu

- Establish wetlands, dunescape and boardwalk
- Create and preserve spaces resilient to future flooding including the ururpā as a priority



#### Ki Uta Ki Tai

- Restore mauri and create improved place for ika and tuna
- Enable environment for healthy kaimoana
- Continue scientific research for healthy waters
- Daylight streams
- Restore area of sandscape



## Te Ara 3 | Priority 3

# Activate

## people with space



Within 5 - 10 Years



### Paihikara & Shared Path

- Implement Paihikara and Manu Plan
- Provide hauora tinana space
- Establish papa tākaro and bike skills park
- Provide education around bird play
- Connect to Mission Bay and Tāmaki Drive



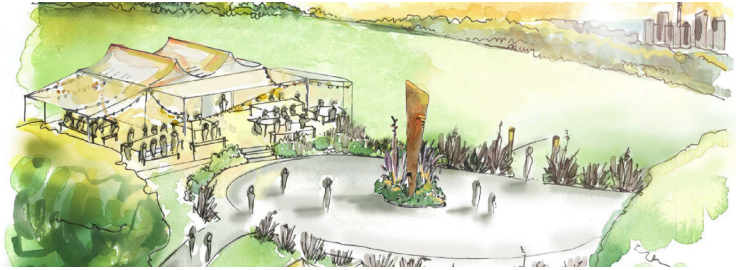
### Markets

- Implement Markets Plan
- Provide opportunities for seasonal day and night markets
- Enable whānau, hapū and regional enterprise
- Establish Te Au Rere – Star compass for education and tourism opportunities



### Tākaro

- Enable living taonga experience
- Support Tuakana – Teina relationship
- Support knowledge through play
- Establish Bike Track and Skills Park



## Ōkahu

- Implement Ōkahu Bay Plan
- Upgrade Papa tākaro & create water play
- Provide spaces for education
- Tell stories of papakāinga through mahi toi
- Provide space for events and festivals, story-telling, navigation, challenges
- Establish safety fencing



## Mahi Toi & Cultural Practice

- Implement Mahi Toi and Cultural Practice Plan plus urupā options
- Create opportunities for mahi toi to enable expression of contemporary and traditional culture
- Offer frameworks for teaching, traditions and whakapapa through mahi toi
- Create paths including boardwalks for better access to Takaparawhau

## Te Ara 4 | Priority 4

# Enhance

## the experience



Within 5 - 10 Years



### Markets

- Complete feasibility for World Class Farm to Plate Restaurant



### Manaaki Manuhiri

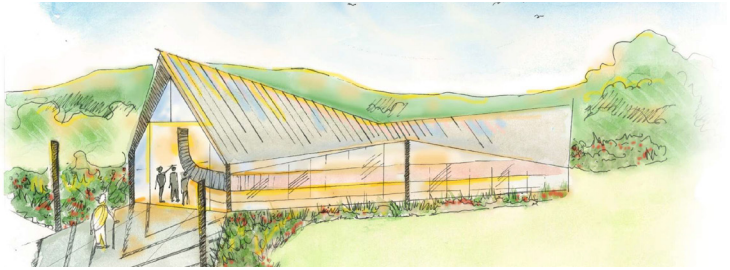
- Work to implement the Manaaki Manuhiri Tourism Centre Plan
- Complete feasibility for Tourism Centre Plan including Ngāti Whātua Ōrākei design principles
- Complete plan for harvesting and maintaining wai as part of building



### Ko Te Pūkaki

- Complete feasibility for Sanctuary for Manu & Breeding Programme
- Complete pest proof fencing investigations
- Complete planning for guided tours





### Waka

- Complete investigations for Ōkahu Whare Waka to allow views and avoid future flooding
- Complete plans for Waka Festival and Waka Crossing
- Complete planning for Waka right of way



### Ōkahu

- Complete plan for Whānau café with connection to tākaro areas
- Complete plan to open awa to Waitematā

## Enhancement Priorities for Whenua Rangatira

- The physical completion of these activities will be a longer-term goal. The focus of this plan is to have a clear plan for these larger infrastructure projects
- This includes ensuring that the activities are consistent with the recreation reserve status.

**Pourewa - a place  
to celebrate those  
values that provide a  
guiding light to lead  
us into a sustainable  
future**





# Pourewa Creek

XXXXXXXXXX  
XXXXXXXXXXXXXXXXXXXX  
XXXXXXXXXXXXXXXXXXXX

## Ngā Ara | Priorities

### Protect

- Ahi Kā
- Kī Uta Kī Tai
- Mahi Toi & Cultural Practice

### Connect

- Ngahere & Harvest
- Ōkahu Rākau
- Pathways & Mahi Toi

### Activate

- Pathways & Mahi Toi
- He Pou Whenua & Mahi Toi
- Ahi Kā
- Waka Festival & Landing
- Summer Camp
- Māra Kai
- He Tomo-Kanga & Hub

### Enhance

- Pathways & Mahi Toi
- He Pou Whenua & Mahi Toi
- Ngahere and Harvest
- Waka Festival and Landing
- Summer camp

These identified areas are indicative of where most of this activity will occur.  
These activities may apply across the entire reserve.



01. He Pou Whenua & Mahi Toi



02. Waka Festival & Landing




03. Ahi Kā



04. Ngahere & Harvest



09. Mahi Toi & Cultural Practice

 Possible urupā site



05. Summer Camp & Tākaro



06. Māra Kai



07. He Tomo-Kanga & Hub



08. Ōkahu Rākau



## Te Ara 1 | Priority 1

# Protect

## the unique parts of Pourewa Creek



### Whithin 5 Years



#### Ahi Kā

- Guide visitors away from archaeological zones
- Establish appropriate cover and path treatment in archaeological zones
- Protect cultural heritage and archaeological sites and zones
- Actively ensure minimal disruption to sensitive areas



#### Ki Uta Ki Tai

- Develop Ki Uta Ki Tai plans to ensure future activities are clearly understood and provided for throughout delivery of this plan
- Undertake ecological restoration in waterways to ensure mauri is restored to both Pourewa and wider Waitemātā



#### Mahi Toi & Cultural Practice

- Work to establish a new urupā including setting aside lands for this purpose

## Te Ara 2 | Priority 2

# Connect

## to nature



### Within 5 – 10 Years



#### Ngahere & Harvest

- Implement Ngahere & Harvest Plan
- Plant waterways to restore wai ora
- Develop timber resource for future cultural hapū use
- Open spaces to reveal natural archaeological terracing
- Plan for and establish sustainable native forest
- Establish place for decommissioned waka



#### Ōkahu Rākau

- Maintain Tāmaki Plant Collection, seed bank and propagation
- Undertake restoration activities
- Maintain knowledge and uses e.g. rongoā
- Continue operation & development of Ōkahu Rākau Concept Plan
- Undertake community planting
- Integrate restoration practices from Whenua Rangatira to Pourewa



#### Pathways & Mahi Toi

- Plan for and apply pathway materials in line with land features and minimal disruption to whenua
- Create entry points with footwear wash stations

## Te Ara 3 | Priority 3

# Activate

## people with space



Within 5 - 10 Years



### Pathways & Mahi Toi

- Complete Gateway Points and Pathways Plan and initiate works
- Progress work on Mahi Toi opportunities plan
- Complete plan to create linkages with existing and future key routes
- Install drinking fountains
- Install paths for range of recreational uses
- Establish pedestrian bridge
- Mark places of significance



### He Pou Whenua Mahi Toi

- Establish Tomo-kanga on Pourewa that frames Kupe St
- Plan for and create opportunities for Mahi Toi



### Ahi Kā

- Make cultural heritage visible
- Connect mātauranga of past to the future
- Create and promote the Pourewa narrative
- Enable story-telling



### Waka Festival & Landing

- Establish festival and markets at Pourewa
- Complete and initiate concept plan for waka festivals and landing



### Māra Kai

- Implement Māra Kai plan
- Establish traditional, pacific and international kai gardening and production
- Provide opportunities to learn and teach to grow and cook
- Establish māra kumara and preserve traditions



### He Tomo-Kanga & Hub

- Implement Tomo-Kanga Plan
- Design, develop and implement the Tomo-kanga and Hub Plan
- Integrate Ōkahu Rākau long term concepts into the hub



### Summer Camp & Tākaro

- Complete and initiate concepts for Summer Camp and Tākaro plan



## Te Ara 4 | Priority 4

# Enhance

## the experience



Within 5 - 10 Years



### Pathways & Mahi Toi

- Complete feasibility for mooring points and water access
- Complete investigations for cycle lanes and widened footpaths



### He Pou Whenua Mahi Toi

- Complete investigations for key gateway markers on Pourewa Bridge and Kupe St
- Complete investigations for Architectural Mahi Toi Structures



### Ngahere & Harvest

- Complete investigations for pedestrian bridge that connects Pourewa
- Complete investigations for treehouse structures to enable views of canopy



### Waka Festival & Landing

- Complete investigations for Whare Waka
- Complete planning for waka right of way



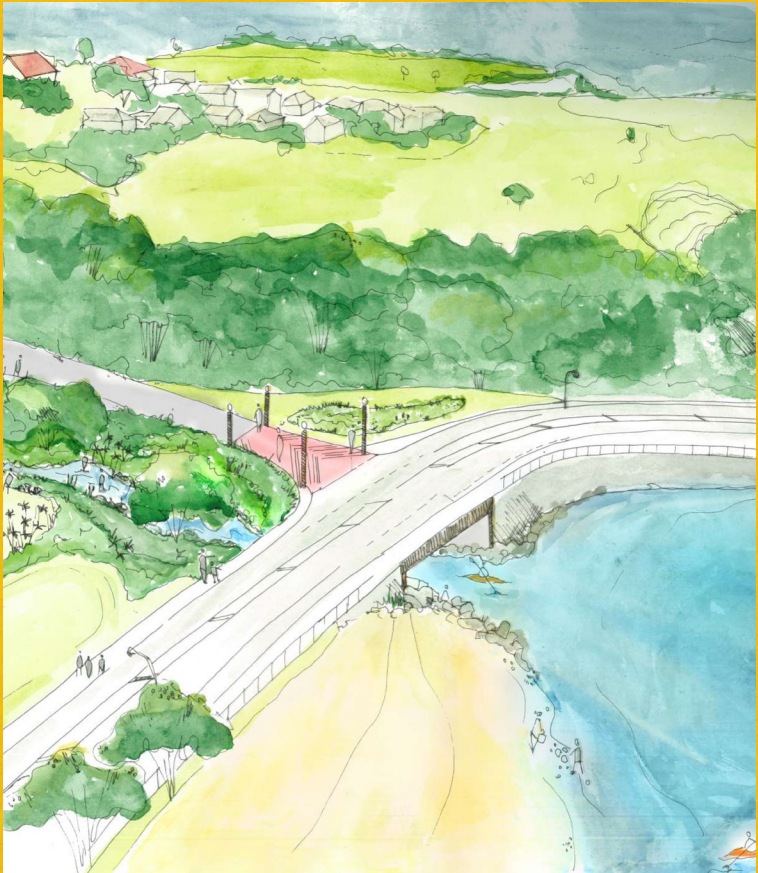
### Summer Camp & Tākaro

- Summer Camp sites and larger infrastructure needs understood

## Enhancement Priorities for Pourewa Creek

- The physical completion of these activities will be a longer term goal. The focus of this plan is to have a clear plan for these larger infrastructure projects
- This includes ensuring that the activities are consistent with the recreation reserve status.

# Ki Uta Ki Tai



**Ki Uta Ki Tai is a specific priority on each reserve but also provides the means to connect the two spaces to each other and wider surrounding. A strong feature is the connection between land and water.**

While the Reserves Board has the mandate to make decisions on Whenua Rangatira and Pourewa Creek, it recognises the need to influence the spaces connected to the reserves to create the desired connected experience.

This section identifies the areas where the Reserves Board will collaborate with adjacent land-owners and administrative authorities to achieve integration with spaces outside the reserves.

## Protect

- Promote pathway routes that lead away from protected areas on the reserves
- Promote mauri of moana e.g. daylighting waterways, water quality, sandscapes, flood protection and cliff stabilisation

## Enhance

- Advocate for and address the disconnection between whenua and wai
- Promote vehicle pathways and roads plan
- Promote use of a pedestrian bridge to Meadowbank train station
- Advocate for the establishment of the Waka Landing

## Connect

- Promote consistent pest control plans and methods
- Promote consistent pathway treatment principles and routes
- Promote consistent activities and research to support improved habitats
- Promote opportunities to revitalize cultural practice

## Activate

- Promote consistent linkages and circulation methods between and around the reserves for vehicles, waka, pedestrian and cycle
- Promote consistent water access and mooring points
- Promote the water connection to Pourewa and Ōkahu Bay
- Promote Paihikara and Shared Path Plan
- Promote Pathways and Mahi Toi Plan

**Bringing together  
many ideas that have  
been considered  
over the years, into a  
collective vision for  
the whenua.**

**Ōrākei Visual Framework, 2019**





Entrance Sketch

# Ngā Poumata

## Matakura | Proud - Embrace Ngāti Whātua Ōrākei status and role as tāngata whenua

Align decisions with the status and role of Ngāti Whātua Ōrākei as tāngata whenua

Enable public to actively experience the manaaki and kaitiaki responsibilities of tāngata whenua

## Matohe | Determined – Protect peoples, lands and taonga for generations to come

Reinvest funds from the reserves back into delivery of the Combined Management Plan

Find ways to bring the public with us when carrying out work on the whenua

## Matawara | Aspirational – Work with whānau and our communities

Create regular opportunities for feedback and engagement

## Matauruuru | Adaptable - Innovate to pursue improved practices

Provide space for thought leadership, new models and research

## Mātātoa | Resilient – Monitor and regularly review

Carry out a 3-yearly monitoring report of the Combined Management Plan

# Our values in practice

Apply Ngāti Whātua Ōrākei design principles

Promote the Ngāti Whātua Ōrākei and Auckland Council partnership

Promote the plan activities with whānau and the social, cultural and commercial benefits to whānau and community

Explore alternative funding to invest in the restoration, protection and enhancement of kaitiakitanga activities

Collaborate with local communities e.g. whānau, residents, Local Board, schools, businesses

Develop a monitoring strategy that measures the health of our taonga

Review Combined Management after third 3-yearly monitoring programme

# Appendix A

## Ōrākei Visual Framework

We acknowledge the extensive work undertaken to develop the Ōrākei Visual Framework and for the significant input from whānau, hapū, the wider community and partner organisations.

The Combined Reserve Management Plan is the legal instrument to give effect to this Vision. The Vision has been maintained in the development of this Plan.

The Reserves Board acknowledges that these are the views of the people and it is committed to deliver.



[Click here to access the Ōrākei Visual Framework](#)



# Kuputaka: Glossary

## ahi kā

long burning fires of occupation, continuous occupation

## Aotearoa

New Zealand

## ara

pathway, in the context of this plan used as a priority activity

## hapū

kinship group, clan, primary political unit in traditional Māori society

## hauora

health, wellbeing

## He Aha Te Hau

A well-known proverb and waiata for the people of Ngāti Whātua Ōrākei.

## ika

fish, marine animal, aquatic animal

## kākahuria te whenua

adorn the land

## kākahuria te moana

adorn the sea

## kai

food, meal

## kaimoana

seafood, shellfish

## kaitiakitanga

guardianship, stewardship

## Ki uta ki tai

from the mountains to the sea

## Ko te Pūkaki

Ōkahu Rākau's ecological restoration project for Whenua Rangatira

## māra

garden, cultivation

## māra kai

food gardens

## marae

courtyard – the open area in front of the whareniui, the complex of buildings around the marae

## mātātoa

resilient

## mātauranga

knowledge, wisdom, understanding, skill

## mahi toi

art, craft

## mahinga kai

garden, cultivation, food-gathering place

## mana whenua

territorial rights, power from the land

## marae

traditional meeting house

## manaaki

care for and hospitality

## manu

bird

## matauruuru

adaptable

## manuhiri

visitors

## matakura

proud

## matatohe

determined

## matawara

aspirational

## mauri

life principle, life force, vital essence

## moana

sea, ocean

## ngahere

bush, forest

## Ngāti Whātua Ōrākei

The landowner and the iwi associated with the lands managed by this Draft Plan

## Ōkahu

Ōkahu Bay

## Ōkahu Rākau

Ngāti Whātua Ōrākei Bush Care and Nursery

**pā**

harakeke flax collection

**paihikara**

bicycle, bike

**papa tākaro**

sports field, playing field, playground

**papakāinga**

original home, home base, village, communal Māori land

**pitomata**

potential

**pou whenua**

post marker, boundary marker, land marker

**Pourewa Reserve**

land held by Ngāti Whātua Ōrākei and co-governed with Auckland Council, encompassing lands that border Pourewa Creek and a smaller land parcel to the north of Kepa Road, means elevated platform

**poutama**

Identity and character, in the context of this used as principles that we work by as ways of demonstrating our identity and character

**rangatira**

chief

**rongoā**

natural remedy, traditional treatment, medicine

**tākaro**

to play

**Takaparawhau**

Bastion Point

**Tāmaki**

in the context of this plan it is a shortened reference to Auckland

**Tāmaki Isthmus**

Auckland Isthmus

**Tāmaki Makaurau**

Auckland

**tāngata whenua**

people of the land

**taonga**

Treasures, things (tangible and intangible) that are prized

**tapu**

sacred, prohibited, restricted, set apart, forbidden

**Te Au Rere**

Star Compass

**tinana**

body

**tomo-kanga**

entrance

**tuakana - teina**

refers to the relationship between an older (tuakana) person and a younger (teina) person

**tuna**

eel of varied species

**urupā**

burial ground, cemetery, graveyard

**wai**

water, stream, creek, river

**wai ora**

health of the water

**waka**

canoe, vehicle

**whānau**

extended family, family group

**whakapapa**

genealogy, genealogical table, lineage, descent

**whareniui**

meeting house

**Whare Waka**

in the context of this plan a canoe centre

**whenua**

land, also in context of whenua burial means placenta or after birth

**Whenua Rangatira**

Reserve land held by Ngāti Whātua Ōrākei and co-governed with Auckland Council, encompassing Takaparawhau (Bastion

DRAFT - AUGUST 2021 V5  
DESIGN DRAFT V11